

- ① Specially designed for welding, more reasonable layout, more accurate work, more stable movement.
- ② Fast speed and natural transition shorten the operation time and greatly improved production efficiency.
- ③ Control cabinet adopts advanced architecture layout, has more space, and the performance has reached the high-end level of the market.
- ④ Control system adopts Advantech Bao Yuan bus system, which is mature and stable with good performance and high market popularity.
- ⑤ Servo system adopts TSINO DYNATRON bus system- leading technology in the industry, the action response is faster, more accurate and more stable.

Control Cabinet YZ-006A-150



6Axis Welding Robot YI-006A-150

Item	Specification	Item	Specification	Axis	Motion Range	Max Speed	Hollow Axis Diameter
Axis	6 Axis	Temperature	0°C — 45°C	J1	±170°	217° /S	—
Capacity	3.0KVA	Humidity	20% — 80%RH (No-Humidity)	J2	+160° — -62°	217° /S	—
Body Weight	180KG	Vibration	<4.9M/S ²	J3	+154° — -85°	274° /S	—
Rated Payload	10KG	Others	No flammable and corrosive gases, liquids, away from electrical noise sources	J4	±135°	311° /S	φ44
Max Range	150CM			J5	+100° — -115°	341° /S	—
Repeatability	±0.05MM			J6	±360°	1100° /S	φ45
IP Grade	IP54/IP65 (Forearm, Wrist)						
Installation	Ground, Ceiling, Wall						

Control System

云华智能

YOOHHEART

The structure and layout of the control cabinet use advanced design concepts, large space, strong and weak electric separation, electromagnetic interference, electrical appliances fully grounded, dust and waterproof, heat dissipation, shipping, etc., are carefully designed to ensure that users can rest assured.

The internal configuration is rich, built-in isolation transformer, double filter, multi-point temperature induction, double heat dissipation unit, etc., the components are selected by the domestic high-end brand, reliable quality.

The control system adopts Advantech Baoyuan 8800 bus system, which can support up to 10 axis servo motor. Advantech Baoyuan 8800 bus system has a high market popularity and has a number of quite mature industry process packages.

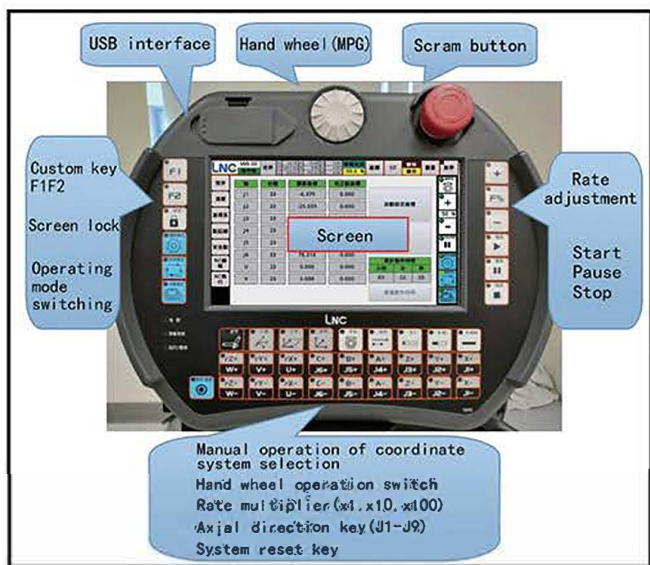
The servo system adopts the TSINO DYNATRON bus system, the driving technology is mature and reliable, the motor torque is abundant, the action response is fast, accurate and stable, and it has been in the industry leader position in domestic market.



Yooheart New Control Cabinet Outlook



Yooheart New Control Cabinet Inside Design



Teaching pendant



TSINO DYNATRON (Servo System)



Advantech-LNC (Control System)

ROBOT BODY FEATURE

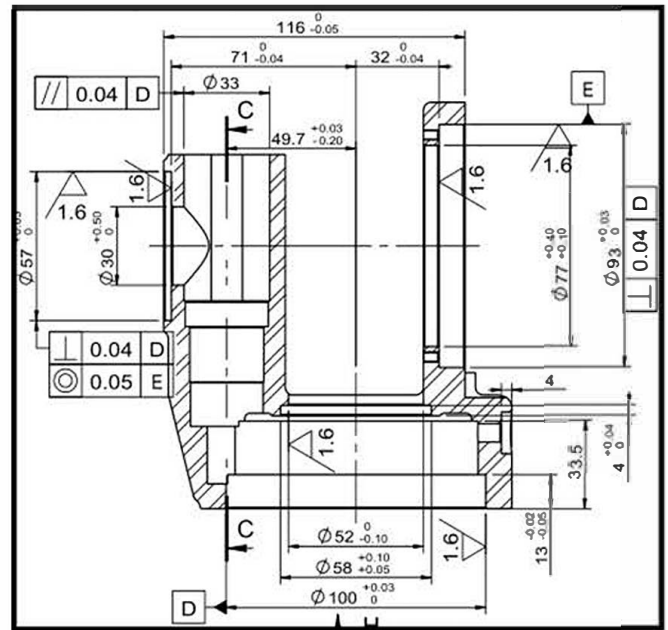
Advanced architecture design is used on this new model, it's full bottom design, reasonable internal cable space, and large cable bending radius fundamentally extends cables service life(P1)

Scientific configured each axis's RV reducer and connecting rod parameters makes robot move faster and lighter. This makes each axle's servo motor and driver load balanced too.

Quality inspection are strictly controlled in casting process and machining process with high standard (P2)

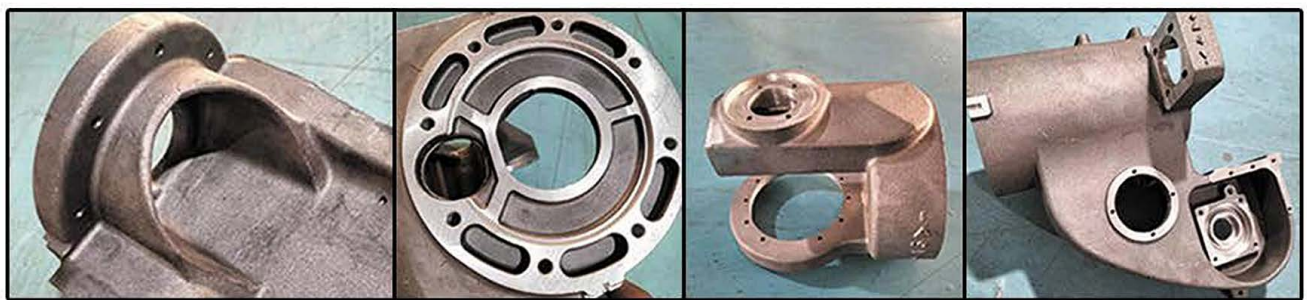


P1



P2

Advanced low pressure casting process is adopted which makes casting with good dense, strong, smooth and delicaded appearance (P3、P4、P5、P6)



P3

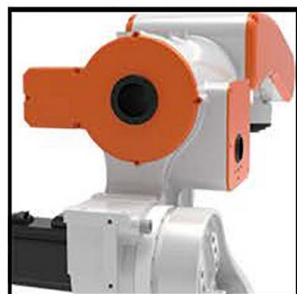
P4

P5

P6

Large hollow high-precision RV reducer is installed on the 4th axle, whose diameter is $\Phi 44\text{mm}$ and The 6th axle joint wrist hollow diameter is $\Phi 45\text{mm}$. This update can meet most water-cooled welding torch passing through (P7 4th Axle,P8 6th Axle)

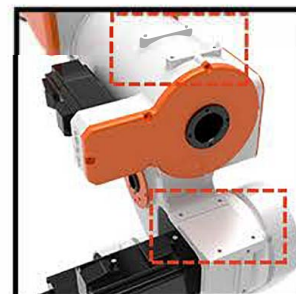
The fixed base and forearm of robot have installation thread hole which can be used by integrator. External cable, Gas pipe and some other equipment can be installed on these holes. (P9 and P10 rectangle marks are reserved holes for installation)



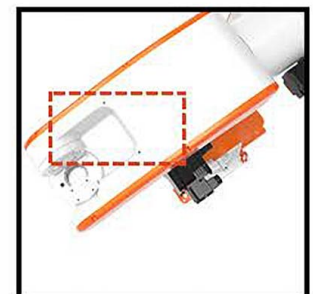
P7



P8



P9



P10

ROBOT PARAMETER



云华智能

YOOHEART

